

**2020 Census**

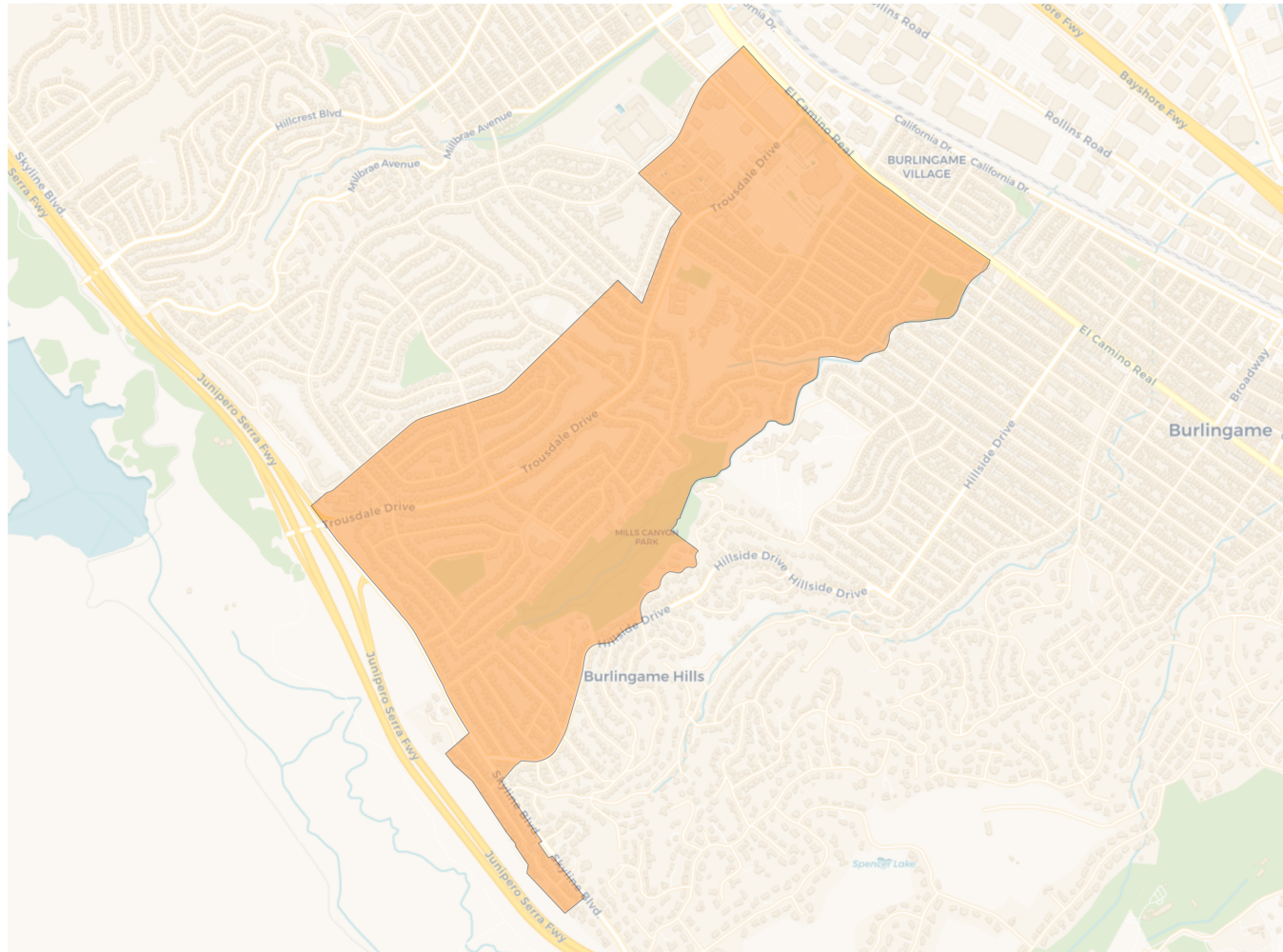
	1	2	3	4	5
Population	6,464	6,225	6,278	6,082	6,367
Deviation	181	-58	-5	-201	84
Deviation %	2.9%	-0.9%	-0.1%	-3.2%	1.3%
Other	2,952	3,797	4,180	3,629	3,721
Other %	45.7%	61.0%	66.6%	59.7%	58.4%
Latino	530	880	626	1,016	1,217
Latino %	8.2%	14.1%	10.0%	16.7%	19.1%
Asian	2,950	1,464	1,429	1,363	1,370
Asian %	45.6%	23.5%	22.8%	22.4%	21.5%
Black	32	84	43	74	59
Black %	0.5%	1.3%	0.7%	1.2%	0.9%

**Citizen Voting Age Population (CVAP)**

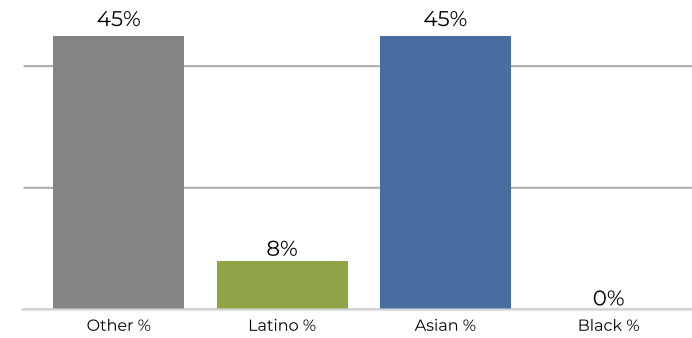
	1	2	3	4	5
Total CVAP	3,719	3,823	3,894	4,011	4,056
Other CVAP	1,927	2,542	2,768	2,601	2,891
Other CVAP %	51.8%	66.5%	71.1%	64.9%	71.3%
Latino CVAP	306	428	273	701	525
Latino CVAP %	8.2%	11.2%	7.0%	17.5%	12.9%
Asian CVAP	1,406	824	824	576	630
Asian CVAP %	37.8%	21.6%	21.2%	14.4%	15.5%
Black CVAP	80	28	29	133	10
Black CVAP %	2.1%	0.7%	0.7%	3.3%	0.2%



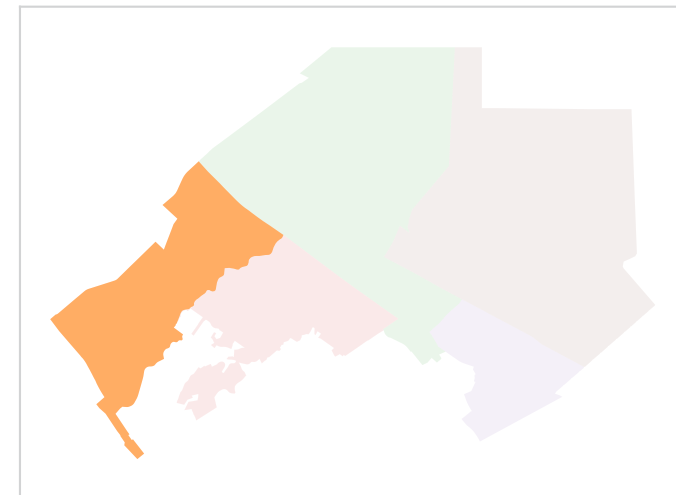
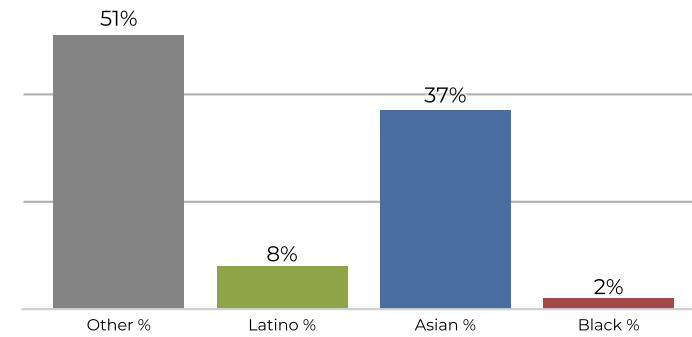
**District 1**



**2020 Census**

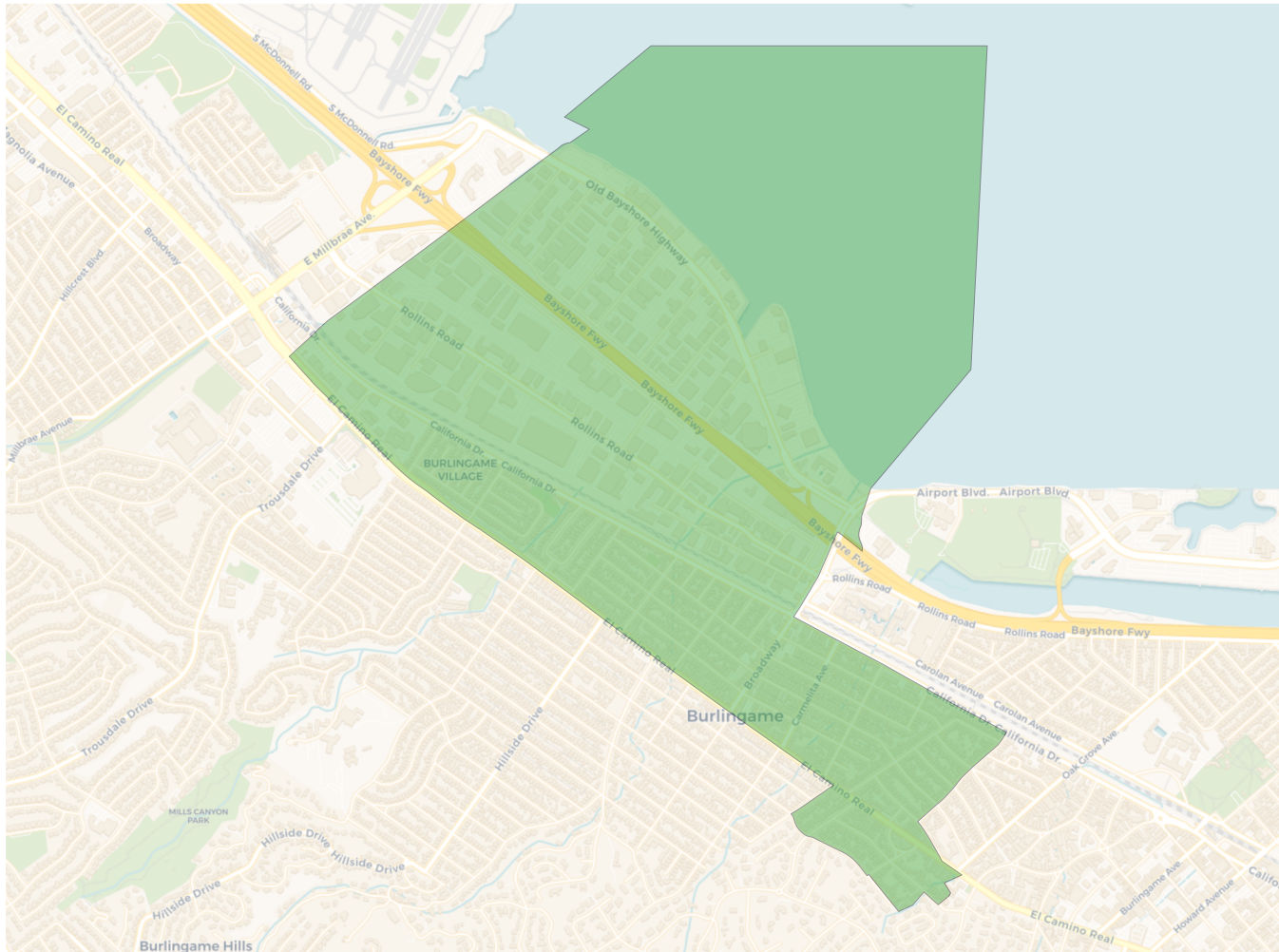


**Citizen Voting Age Population**

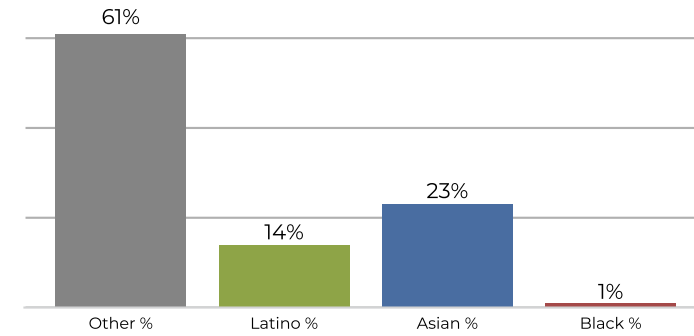


Population	Deviation	Deviation %	Other	Other %	Latino	Latino %	Asian	Asian %	Black	Black %
6,464	181	2.9%	2,952	45.7%	530	8.2%	2,950	45.6%	32	0.5%
Total CVAP	Other CVAP	Other CVAP %	Latino CVAP	Latino CVAP %	Asian CVAP	Asian CVAP %	Black CVAP	Black CVAP %		
3,719	1,927	51.8%	306	8.2%	1,406	37.8%	80	2.1%		

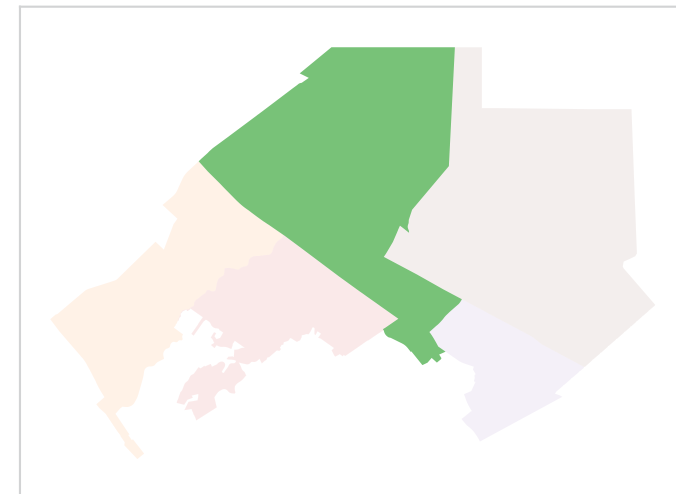
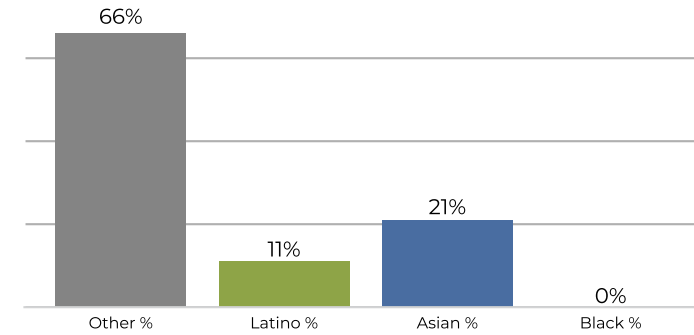
**District 2**



**2020 Census**



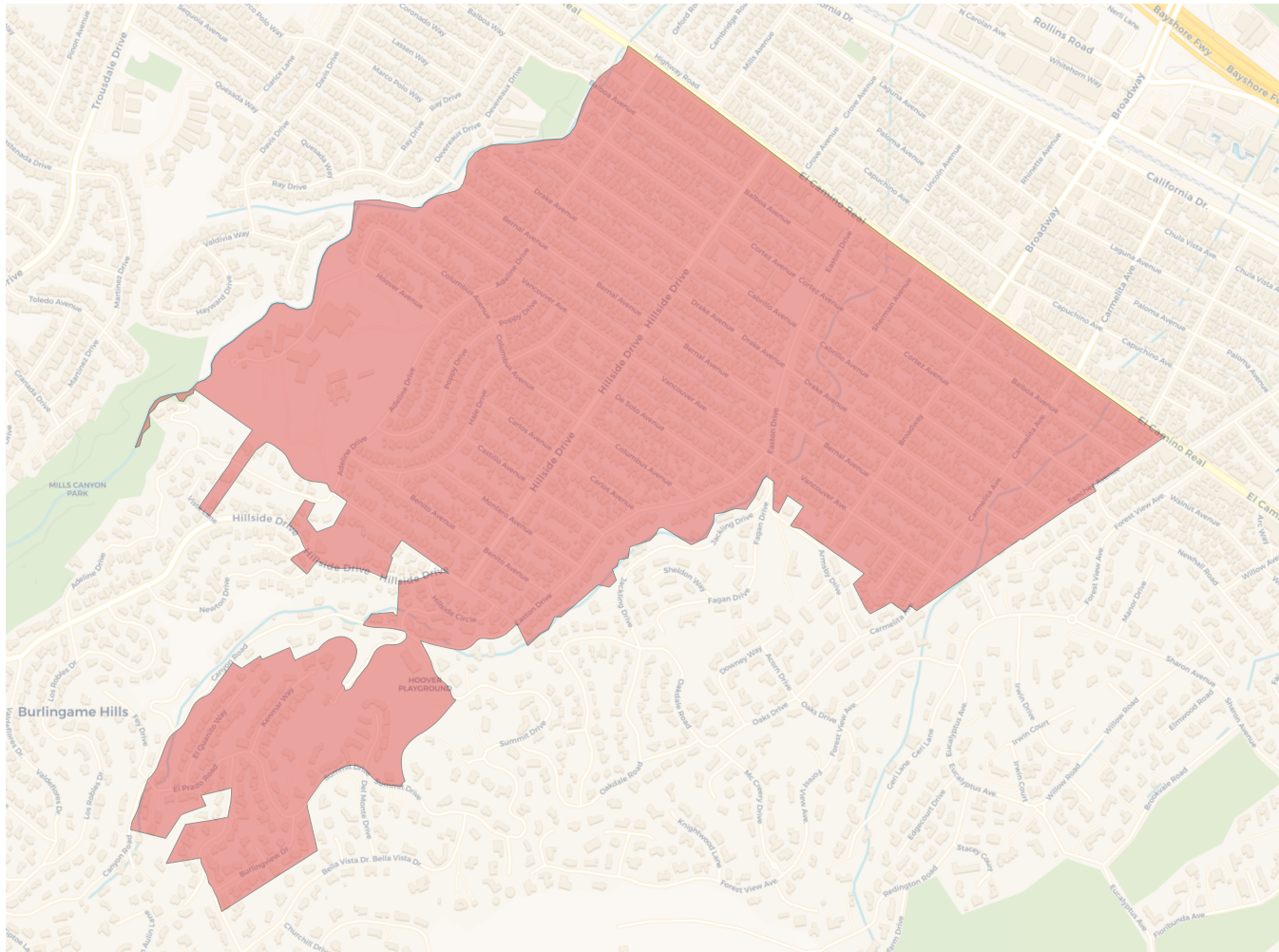
**Citizen Voting Age Population**



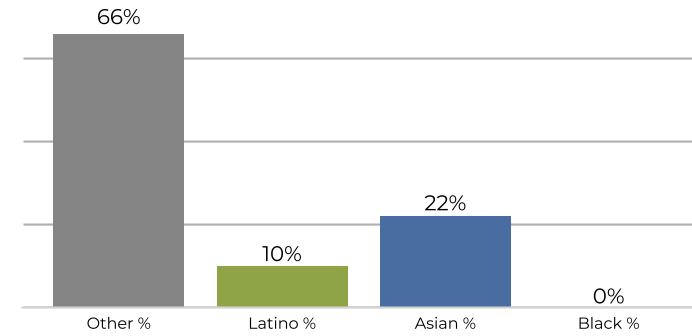
Population	Deviation	Deviation %	Other	Other %	Latino	Latino %	Asian	Asian %	Black	Black %
6,225	-58	-0.9%	3,797	61.0%	880	14.1%	1,464	23.5%	84	1.3%
Total CVAP	Other CVAP	Other CVAP %	Latino CVAP	Latino CVAP %	Asian CVAP	Asian CVAP %	Black CVAP	Black CVAP %		
3,823	2,542	66.5%	428	11.2%	824	21.6%	28	0.7%		



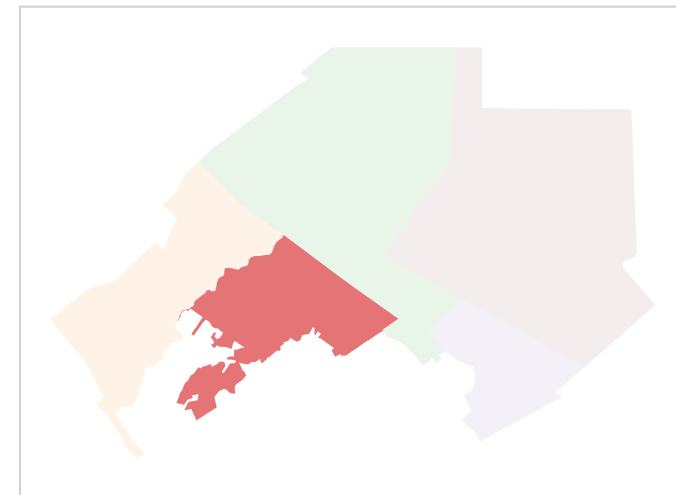
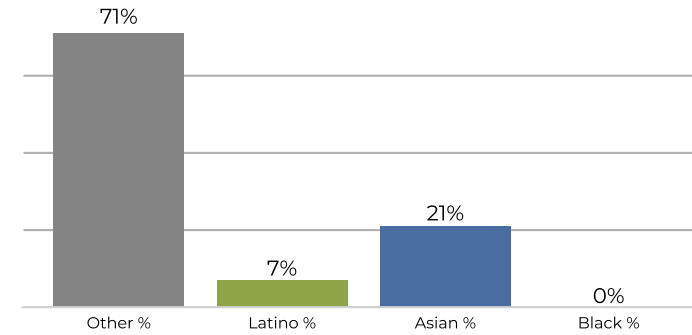
**District 3**



**2020 Census**

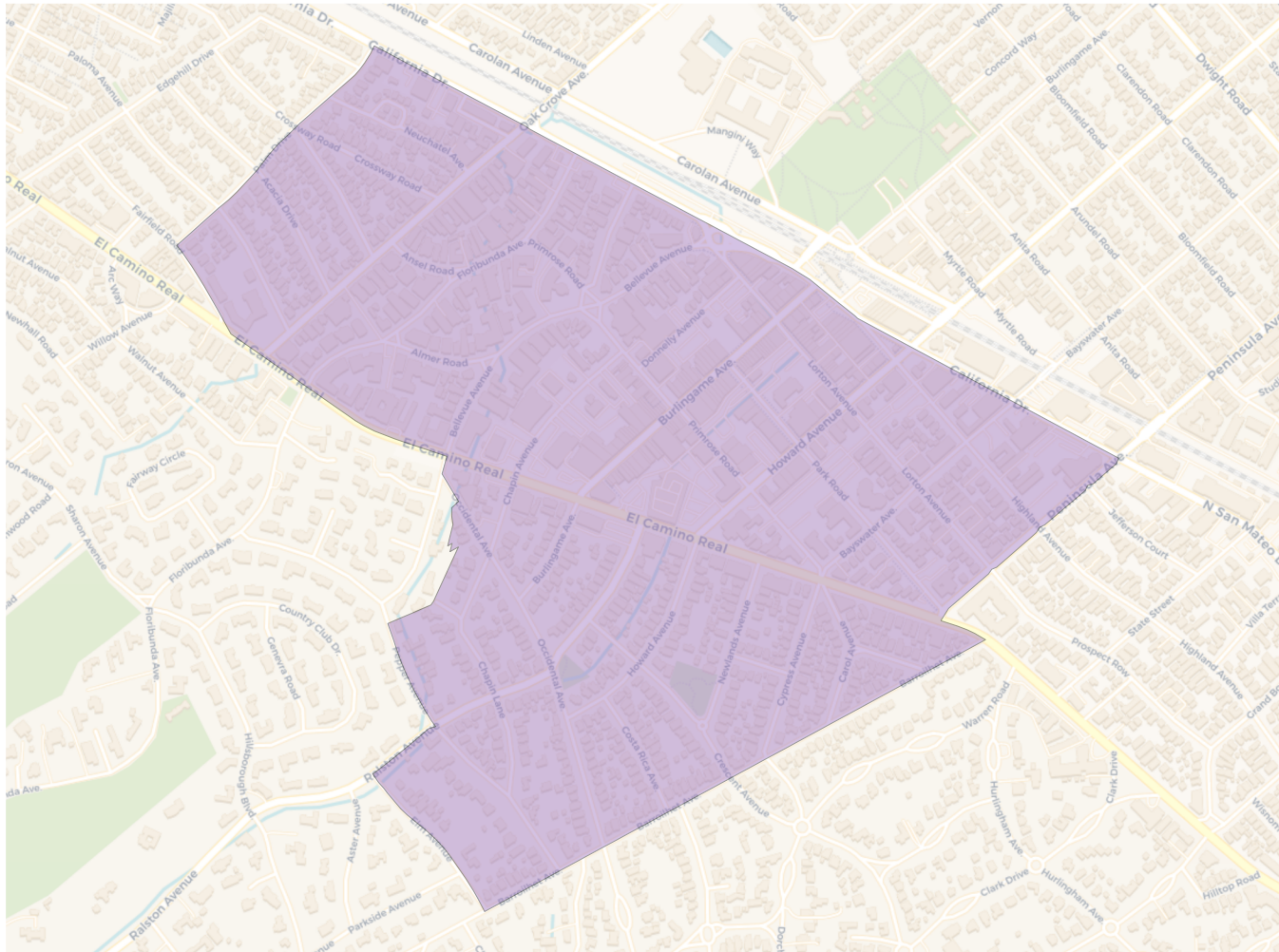


**Citizen Voting Age Population**

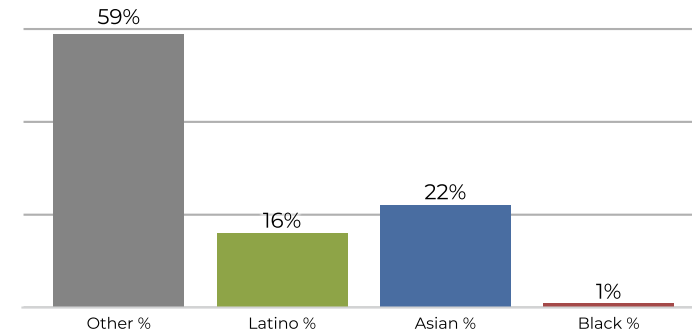


Population	Deviation	Deviation %	Other	Other %	Latino	Latino %	Asian	Asian %	Black	Black %
6,278	-5	-0.1%	4,180	66.6%	626	10.0%	1,429	22.8%	43	0.7%
Total CVAP	Other CVAP	Other CVAP %	Latino CVAP	Latino CVAP %	Asian CVAP	Asian CVAP %	Black CVAP	Black CVAP %		
3,894	2,768	71.1%	273	7.0%	824	21.2%	29	0.7%		

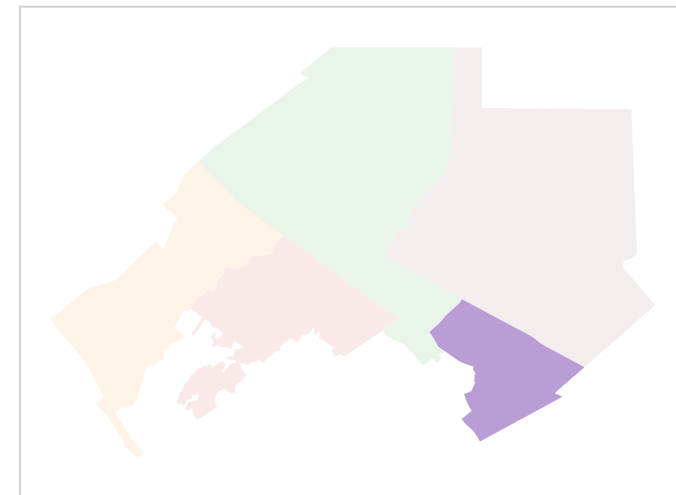
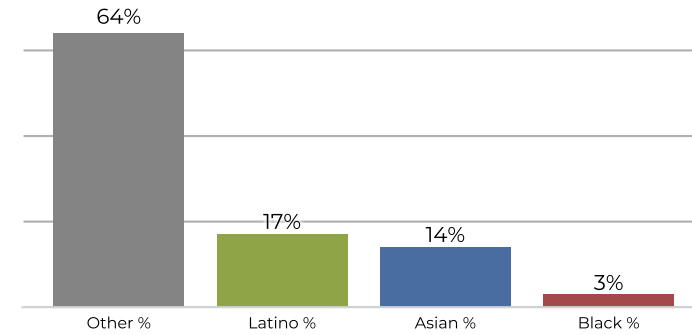
**District 4**



**2020 Census**



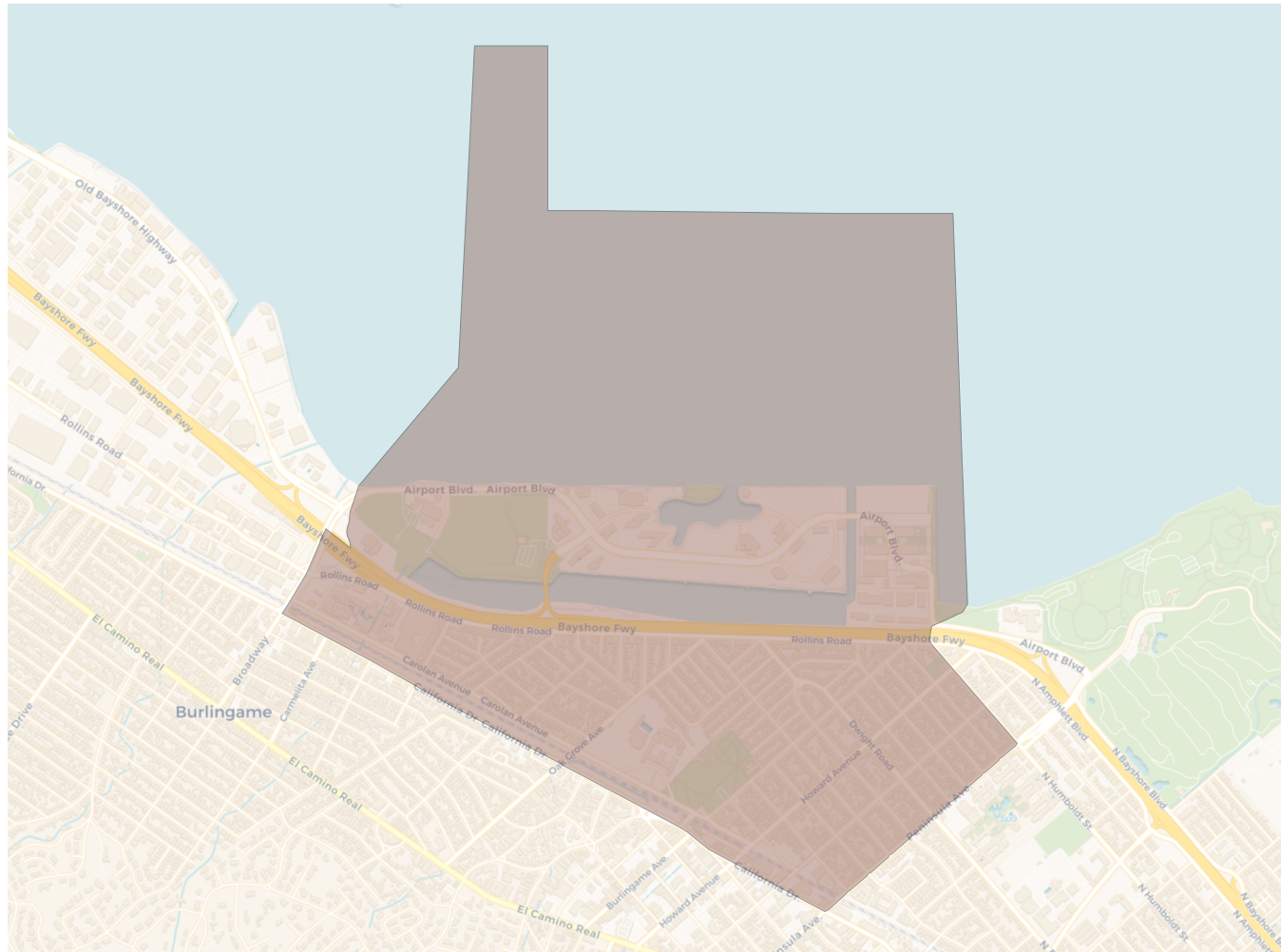
**Citizen Voting Age Population**



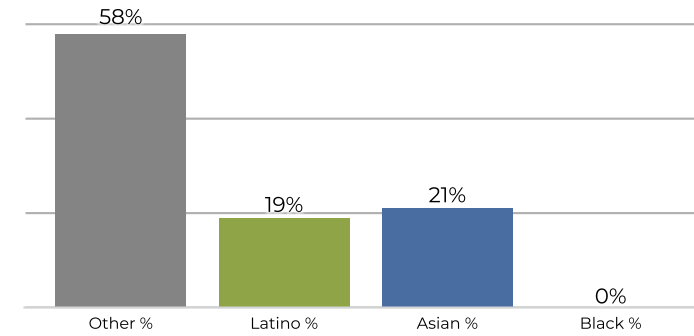
Population	Deviation	Deviation %	Other	Other %	Latino	Latino %	Asian	Asian %	Black	Black %
6,082	-201	-3.2%	3,629	59.7%	1,016	16.7%	1,363	22.4%	74	1.2%
Total CVAP	Other CVAP	Other CVAP %	Latino CVAP	Latino CVAP %	Asian CVAP	Asian CVAP %	Black CVAP	Black CVAP %		
4,011	2,601	64.9%	701	17.5%	576	14.4%	133	3.3%		



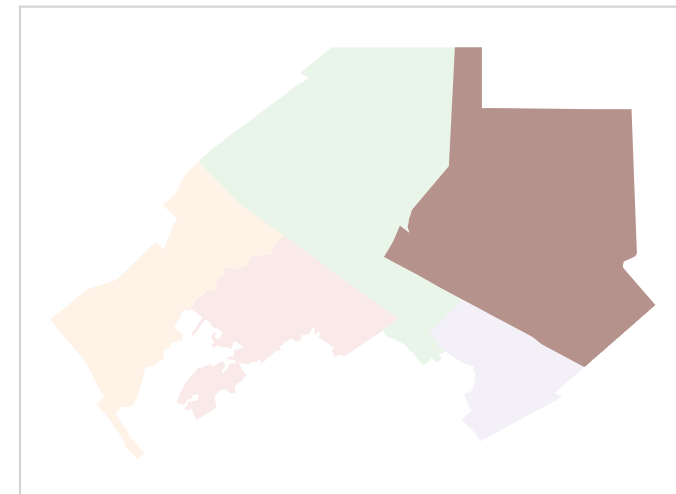
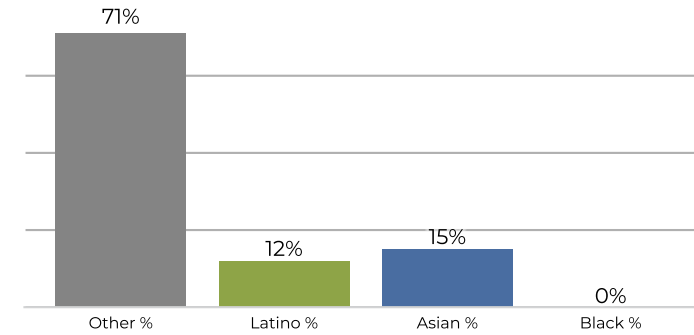
**District 5**



**2020 Census**



**Citizen Voting Age Population**



Population	Deviation	Deviation %	Other	Other %	Latino	Latino %	Asian	Asian %	Black	Black %
6,367	84	1.3%	3,721	58.4%	1,217	19.1%	1,370	21.5%	59	0.9%
Total CVAP	Other CVAP	Other CVAP %	Latino CVAP	Latino CVAP %	Asian CVAP	Asian CVAP %	Black CVAP	Black CVAP %		
4,056	2,891	71.3%	525	12.9%	630	15.5%	10	0.2%		